



Risk-based meat inspection Role for the risk assessor

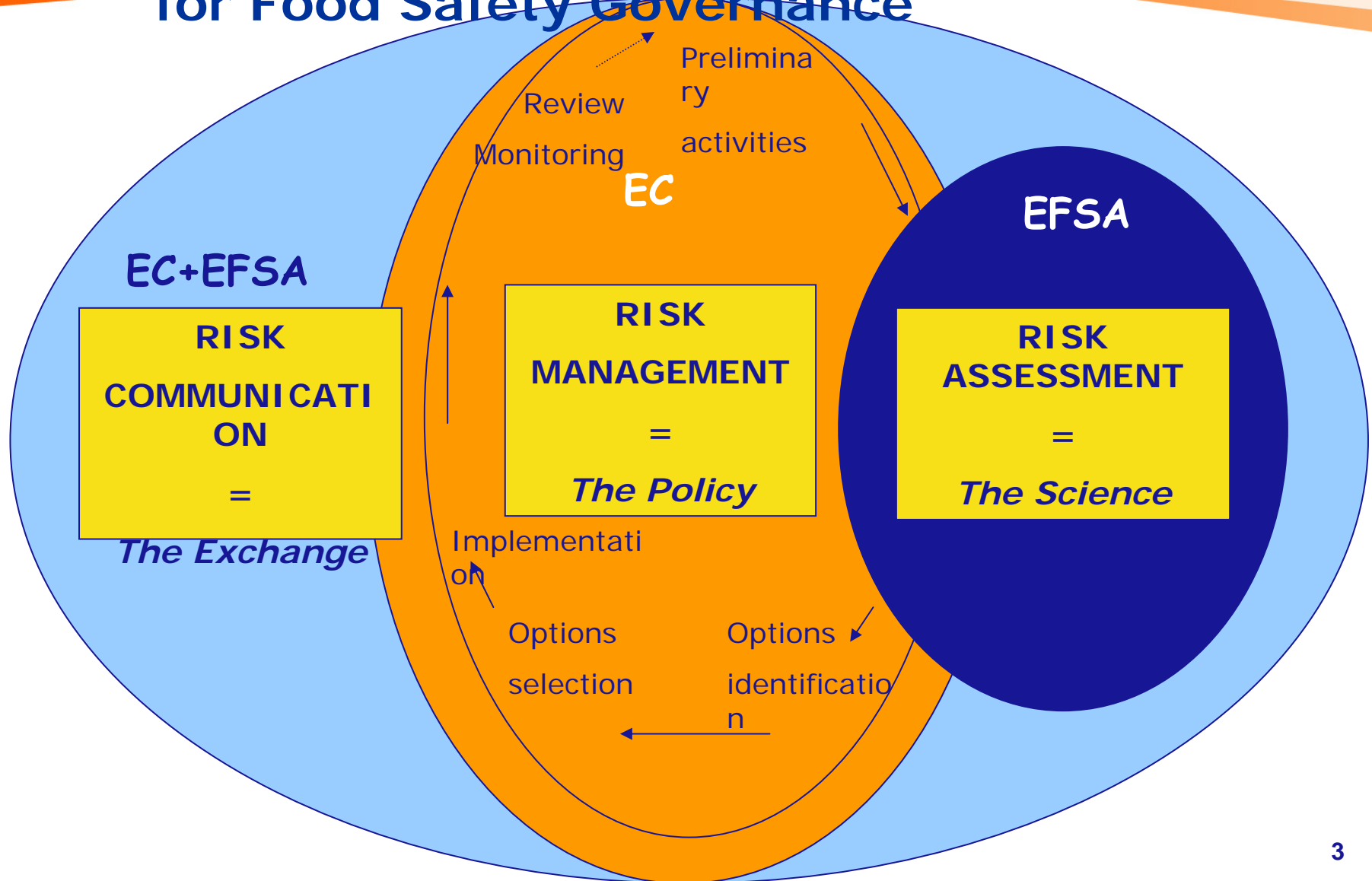
**COPA-COGECA/FVE/UECBV Joint seminar
on the future of Meat Inspection
Brussels, 14th September 2010**

**Dr Marta Hugas
Head of Unit
Unit on Biological Hazards**

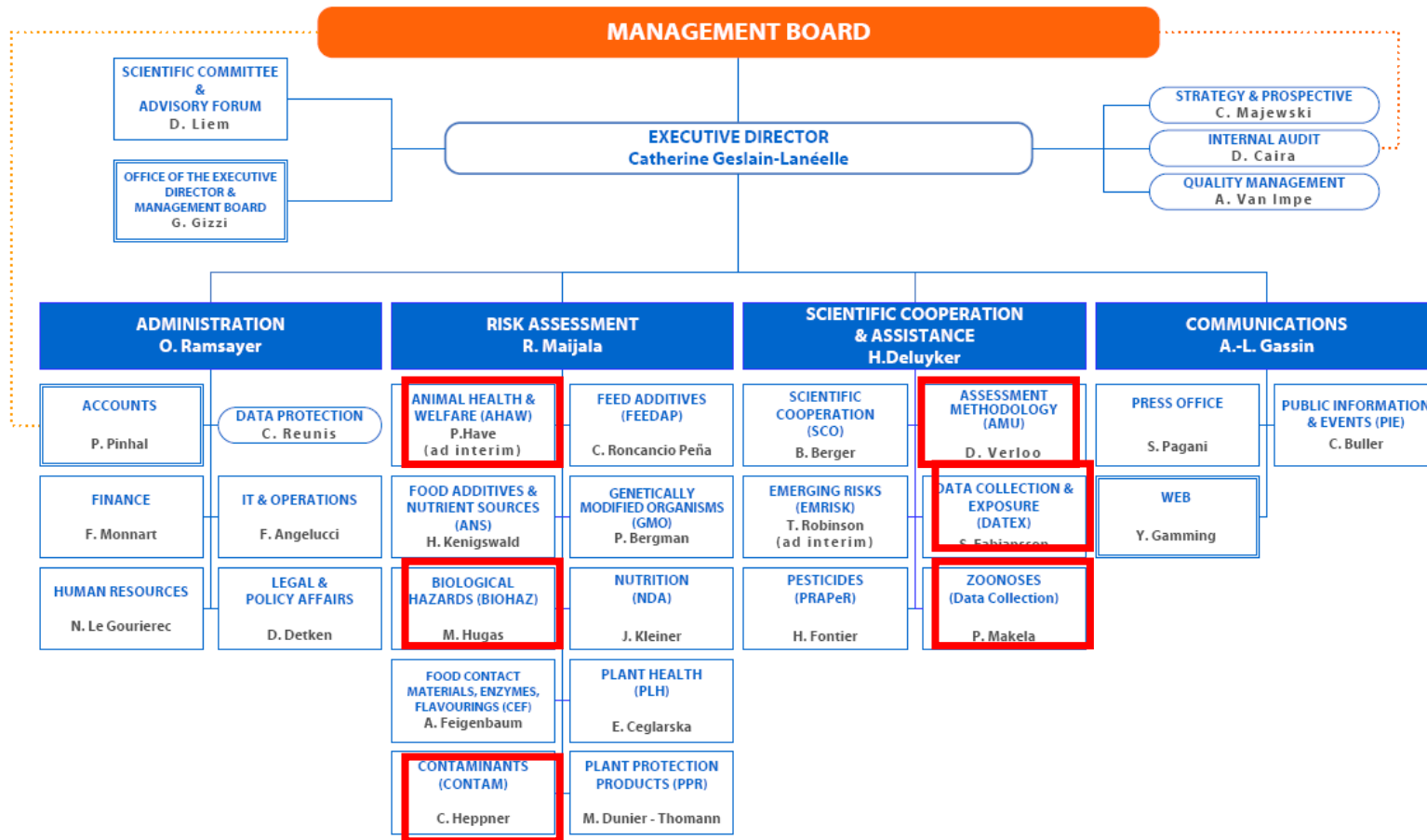
- Provide **scientific advice** and **scientific and technical support** for the Community's legislation and policies in all fields which have a direct or indirect impact on **Food and Feed Safety**.
- Provide **independent** information on all matters within these fields with a high level of **openness** and **transparency**;
- **Risk Communication**;
- **Collaboration** and **Networking**.

Risk Analysis [CAC,01]: a decision paradigm

for Food Safety Governance



EFSA's organisational structure



Organisational chart 2009

From the “question” to the “answer”



European Commission



European Parliament



Member States



EFSA (“self tasking”)

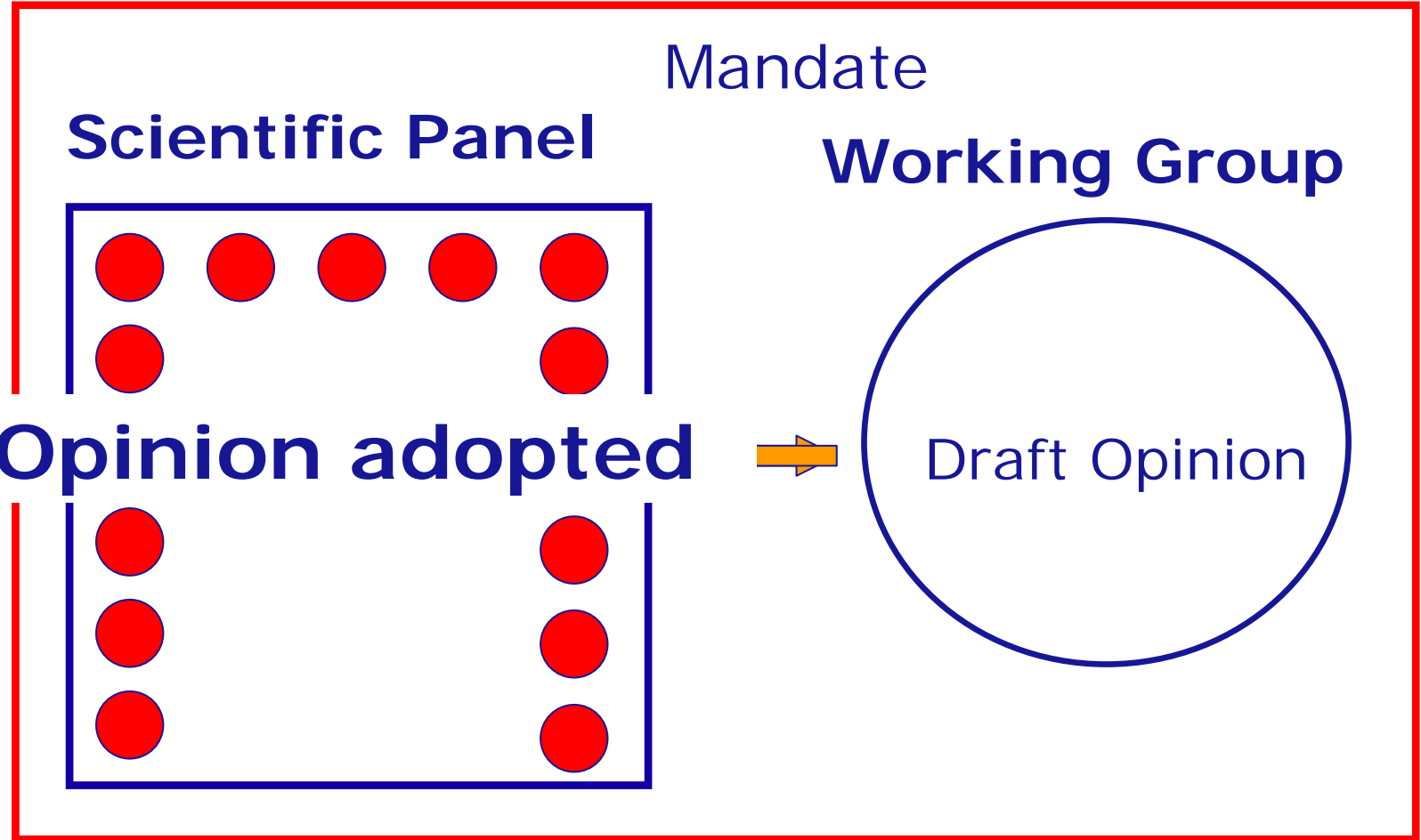


Question?

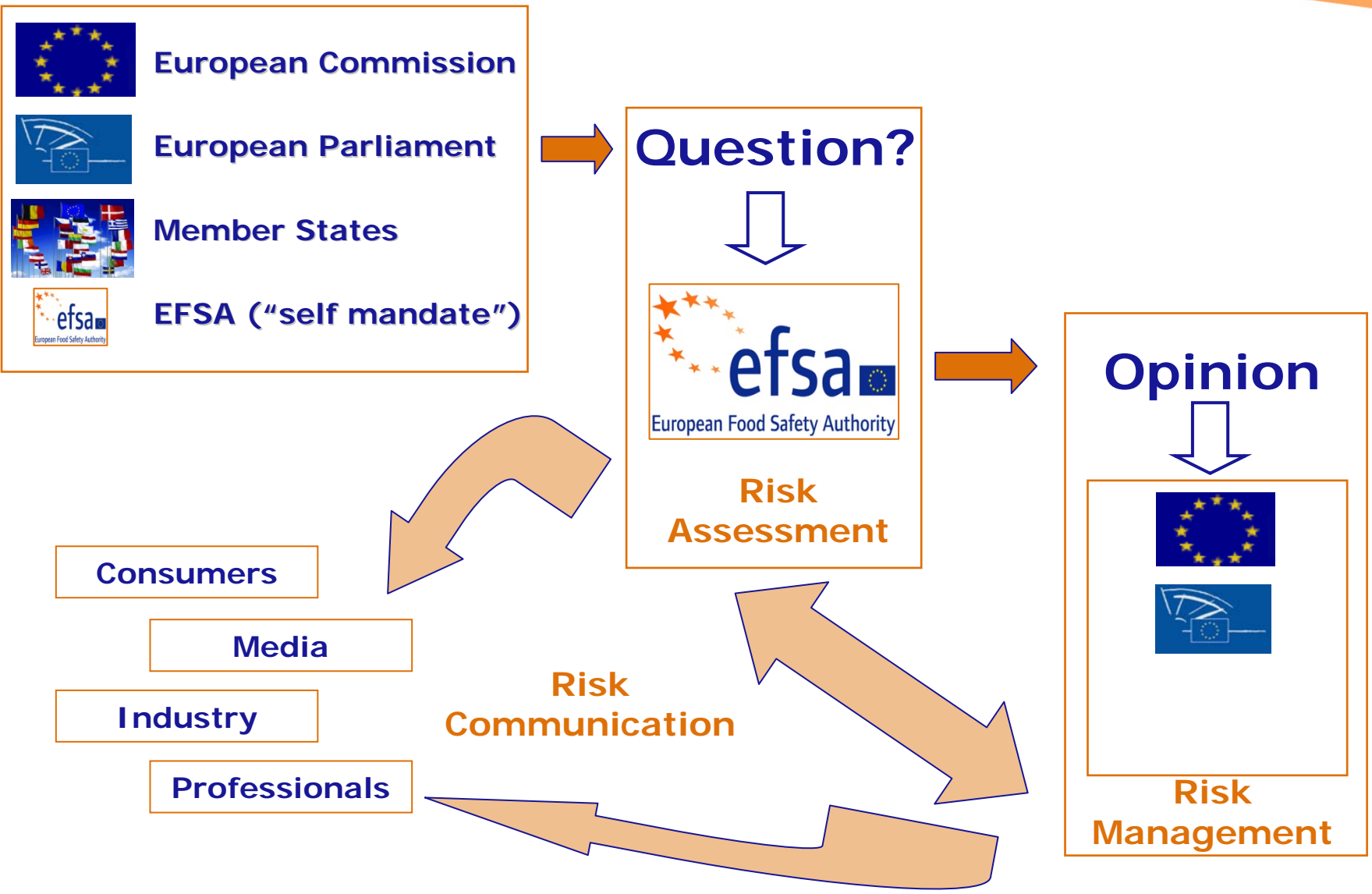


Risk
Assessment

From the “question” to the “answer”



From the “question” to the “answer”



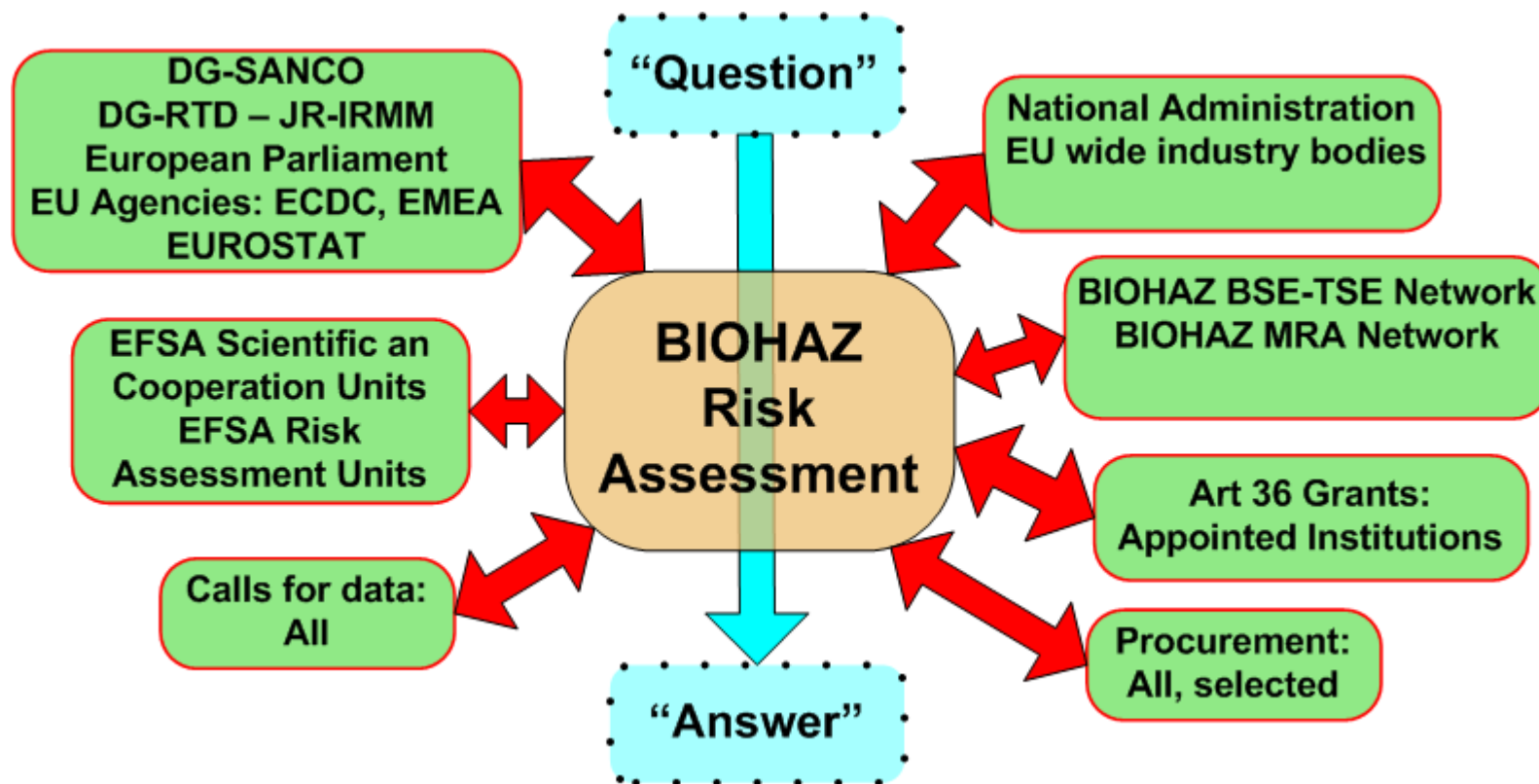
What happens after adoption?

- **Publication in EFSA website.**
- **Communicated** to originator of question (EC, MS, Parliament) and **support for changes of legislation.**
- **In the Scientific Opinion:**
 - Background and explanation of the ToR.
 - Assessment (detailed report of the Working Group).
 - Conclusions.
 - Set of recommendations:
 - **Reduce data gaps and scientific uncertainty.**
 - Communicated to RM;
 - Communicated to DG Research of the EC (DG RTD);
 - Mostly advice for **future research topics**

The Panel on Biological Hazards deals with questions on biological hazards relating to **Food Safety and **Food-borne Diseases**, including:**

- Food-borne Zoonoses;**
- Food Hygiene;**
- Microbiology;**
- Transmissible Spongiform Encephalopathies;**
- Associated Waste Management.**

Risk Assessment players



“Classical” Meat Hygiene Inspection



Microbiological Meat Hygiene

Specified Risk Materials controls



BIOHAZ opinions:

- Tuberculosis in bovine animals: Risk for human health and control strategies (EFSA-Q-2003-025; 11/03)
- Meat Inspection procedures for lambs and goats (EFSA-Q-2003-027; 04/04)
- Revision of Meat Inspection for beef raised in integrated production systems (EFSA-Q-2003-026B; 12/04)
- Risk Assessment of a revised inspection of slaughter animals in areas with low prevalence of *Cysticercus* and *Trichinella* (EFSA-Q-2004-017A and B; 01/05 and 03/05)
- Feasibility of establishing *Trichinella* free areas, and if feasible on the risk increase to PH of not examining pigs from those areas for *Trichinella* spp. (EFSA-Q-2005-001; 10/05).
- Health risk associated with the adoption of a visual inspection system in veal calves raised in a Member State considered free of tuberculosis (EFSA-Q-2005-239; 05/06)

Risk-based meat inspection without incisions



Source: NCSU Library – Copyright free for non-commercial purpose.

April 2004 –

Reg. (EC) 854/2004 of 29 April 2004 laying down specific rules for the organisation of official controls on products of animal origin intended for human consumption.

Between 2003 and 2005 – Five EC questions to EFSA on meat inspection issues (small ruminants and veal calves).

Between 2003 and 2006 – EFSA adopts and publishes the requested Scientific Opinions.

October 2007 –

Reg. (EC) 1244/2007 of 24 October amending Regulation (EC) No 2074/2005 as regards implementing measures for certain products of animal origin intended for human consumption and laying down specific rules on official controls for the inspection of meat.

Ongoing Risk Assessments on Meat Inspection

*“Public Health Hazards to be covered by
inspection of meat”*

New Mandate from the EC: background

- In Nov 2008 CVO's agreed on conclusions on modernisation of sanitary inspection in slaughterhouses based on the recommendations issued during a seminar organised by the French Presidency. They were considered at a the Commission report
- Council Conclusions on the Commission report (Nov 2009) invite the Commission to prepare concrete proposals allowing the effective implementation of modernised sanitary inspection in slaughterhouses while making full use of the principle: '**risk-based approach**'
- In accordance with Article 20 of Regulation (EC) No 854/2004, the Commission shall consult EFSA on certain matters falling within the scope of the Regulation whenever necessary.

- As described, EFSA (BIOHAZ Panel) and the Commission's former SCVPH issued in the past a number of opinions on meat inspection considering separately
 - specific hazards
 - production systems
- In order to guarantee a more **risk-based approach**, it is needed:
 - an assessment of the risk caused by specific hazards, taking into account the evolving epidemiological situation in Member States.
 - In addition, methodologies may need to be reviewed taking into account
 - risks of possible cross-contamination,
 - trends in slaughter techniques and
 - possible new inspection methods.

Requests for scientific opinions on the hazards to be covered by inspection of meat

Terms of reference (Annex 1)

SCOPE:

- To evaluate meat inspection in order to assess the fitness of the meat for human consumption
- To monitor food-borne zoonotic infections (public health)
 - without jeopardizing the detection of certain animal diseases nor the verification of compliance with rules on animal welfare at slaughter

For the species:

- ❖ domestic swine, poultry,
- ❖ bovine animals over six weeks old,
- ❖ bovine animals under six weeks old,
- ❖ domestic sheep and goats,
- ❖ farmed game and
- ❖ domestic solipeds

- i. Ensuring a risk-based approach**
- ii. Considering relevant international guidance (CAC, OIE)**
- iii. In consultation with ECDC**

Terms of reference (Annex 1)

- Identify and rank the main risks for PH that should be addressed by meat inspection at EU level.
- Assess the strengths and weaknesses of the current meat inspection methodology and recommend possible alternative methods, taking into account implications for animal health and welfare.
- Recommend additional inspection methods in case other previously not considered hazards have been identified above (e.g. salmonellosis, campylobacteriosis).
- Recommend possible alternative methods and adaptations of inspection methods and/or frequencies of inspections that provide an **equivalent level of protection** within the scope of meat inspection or elsewhere in the production chain that may be used by risk managers in case they consider the current methods disproportionate to the risk.
 - e.g. based on the risks or on data obtained using harmonised epidemiological criteria. When appropriate, food chain information should be taken into account.

- Issues outside the scope of the mandate:
 - Transmissible Spongiform Encephalopathies (TSEs)
 - Issues other than those of PH significance that compromise fitness of meat for human consumption (eg. sexual odour)
 - Impact of changes to meat inspection procedures on occupational health of abattoir workers, inspectors, etc
 - The definition of the responsibilities of the different actors (official veterinarians, official auxiliaries, staff of food business operators) is excluded from this mandate

Requests for technical assistance defining harmonised human health epidemiological criteria to carry out risk analysis within the scope of meat inspection

SCOPE:

- technical assistance on harmonised epidemiological criteria for specific PH hazards in food and animals to be used by risk managers in case they consider the current methods for meat inspection address the relevant risk not adequate
- Where possible, such epidemiological criteria should be based on monitoring activities already laid down in European Union provisions, in particular in Regulation (EC) No 882/2004, Regulation (EC) No 2160/2003, Regulation (EC) No 852/2004, Regulation (EC) No 853/2004, Regulation (EC) No 854/2004 and their implementing acts.

For the species:

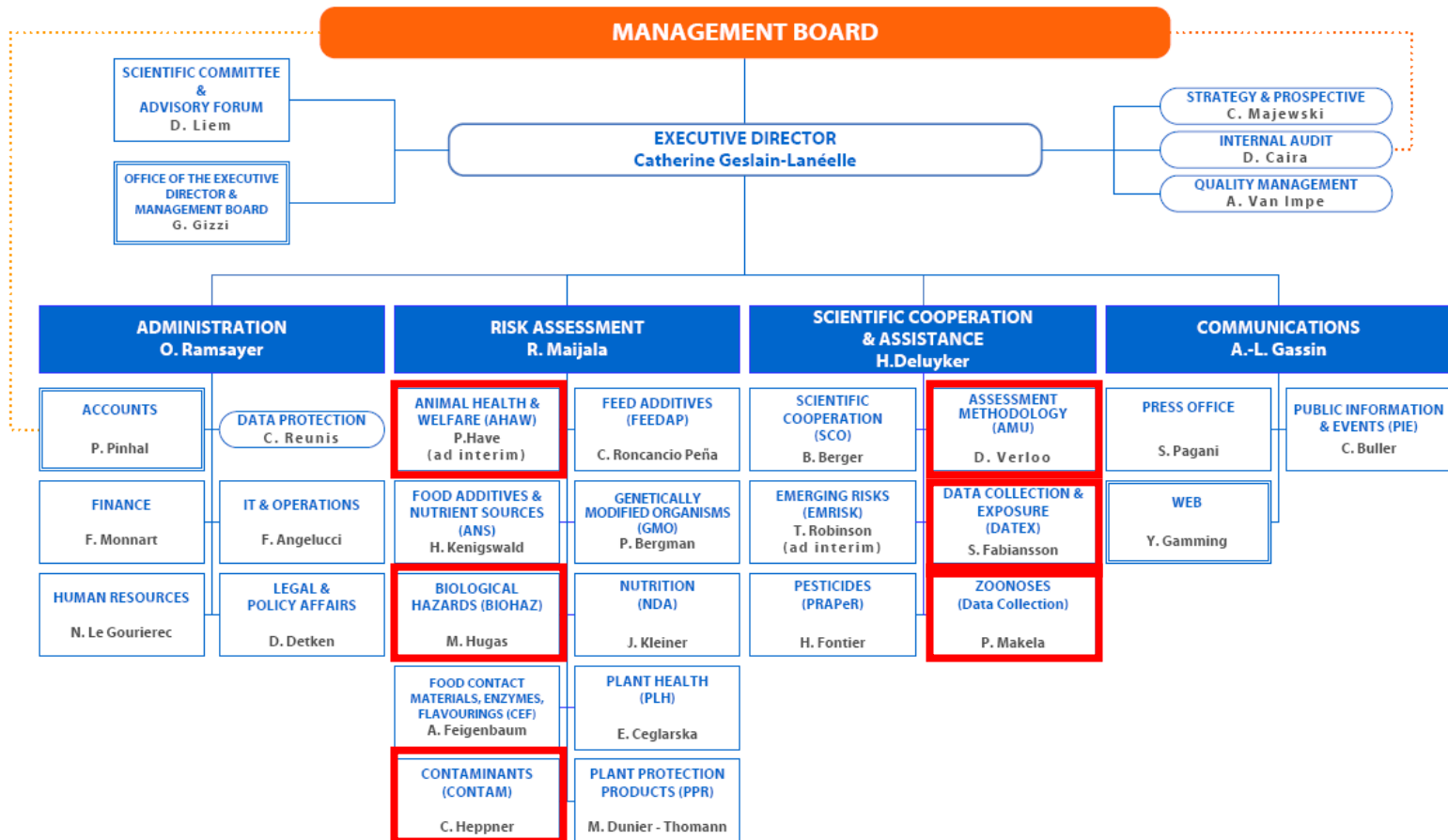
- ❖ domestic swine, poultry,
- ❖ bovine animals over six weeks old,
- ❖ bovine animals under six weeks old,
- ❖ domestic sheep and goats,
- ❖ farmed game and
- ❖ domestic solipeds

Terms of reference (Annex 2)

- Define **harmonised epidemiological criteria** for specific hazards already covered by current meat inspection (trichinellosis, tuberculosis, cysticercosis, ...) and for possible additional hazards identified in a scientific opinion on the hazards to be covered by inspection of meat (see Annex 1), which can be used to consider adaptations of meat inspection methodology (e.g. prevalence, status of infection).
- Provide a summary of comparable data from Member States based on the above defined harmonised epidemiological criteria, if existing, e.g. from ongoing monitoring in humans, food or animals.
- Recommend methodologies and minimum monitoring/inspection requirements to provide comparable data on such harmonised epidemiological criteria, in particular if comparable data are missing.

- Integrated answer:
 - EFSA statement: approach taken and state-of-the art of meat inspection in the EU
 - 1 opinion and 1 report/species
- In each opinion:
 - Chapters from BIOHAZ Panel
 - Chapter from AHAW Panel
 - Chapter from CONTAM Panel
 - Overall conclusions and recommendations
- In each report:
 - Work from Zoonoses Monitoring Unit
 - Work from Assessment Methodology Unit
 - Work from Data Collection and Exposure Unit

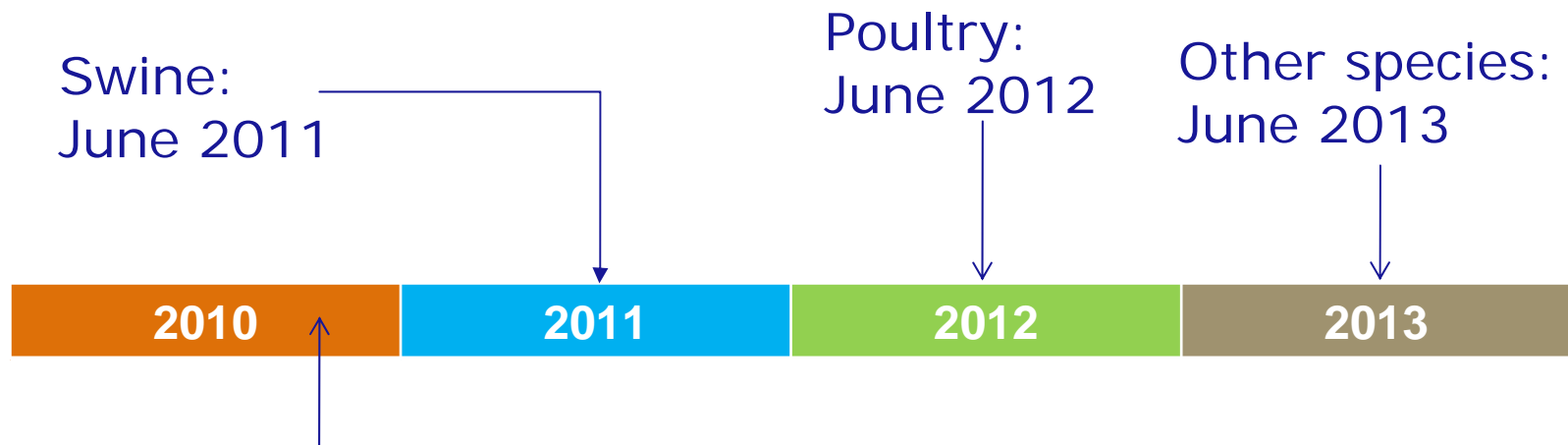
EFSA's organisational structure



Organisational chart 2009

Timelines for the mandates

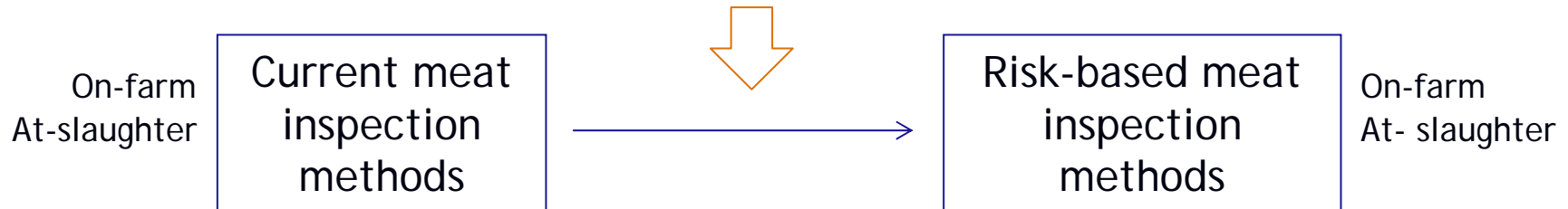
Deadlines



- State-of-the art of Meat inspection practices in the EU
- Meat Inspection and implications for AHAW
→ *Call for proposals Art 36*
- Unit on Zoonoses Data Collection (Zoonoses)
Request for assistance in descriptive and statistical analyses of the surveillance and monitoring data on zoonotic agents in EU related to public health hazards to be covered by meat inspection (Negotiated procedure)

Implications of meat inspection mandate on AHAW

Suggested changes in the light of public health risks
[BIOHAZ, CONTAM]



Given the need for equivalent achievement of objectives, what are the implications for:

- animal disease monitoring/surveillance (other than food borne zoonoses), and*
- compliance with rules on animal welfare?*
- Key issue: Cooperation/synergy with other EFSA panels/units*

AHAW Outsourcing: Scope of the call

- *Contribution of meat inspection to animal health surveillance for diseases other than food-borne zoonoses*
- *The overall objective of this Article 36 call for proposals will be to assist the AHAW Panel to reply the Commission's request*
- *Restricted to the list adopted by EFSA Management Board according to article 36 of European Parliament and Council Regulation (EC) No 178/2002*

AHAW Outsourcing: Published on EFSA web



European Food Safety Authority

Committed to ensuring that Europe's food is safe



de en fr it

Search

Go

About EFSA

News

Scientific Documents

Panels & units

Networks

Calls & consultations

Events

Topics A-Z

Home > Calls & consultations > Article 36 grants

Print

Procurement

▶ Article 36 grants




Calls for data

Consultations

Article 36 grants

Article 36 of EFSA's Founding Regulation allows the Authority to financially support projects and activities that contribute to EFSA's mission through grants. Activities include data collection, preparatory work for the development of scientific opinions, and other scientific and technical support. Grants can exclusively be given to a pre-defined list of organisations, based of nominations made by Member States.

Specific questions about calls can only be sent to the email address indicated in the "Call for Proposals and Guide for Applicants" published for each call.

- [Calls for proposals planned to be launched](#)  (0.1 Mb) under the EFSA's Annual Work Programme for Grants in 2010- Please note that the information (titles, budget and timing) provided here is only indicative, with the purpose to inform potential applicants; EFSA is not bound to launching these calls as specified.
- [Status of calls for proposals](#)  (0.1 Mb)
- [Article 36 cooperation – cooperation and networking with Member States under Article 36 of EFSA Founding Regulation](#)
- [List of competent organisations](#)  (0.3 Mb)

See Also

- [EFSA strategies, policies and procedures](#)
- [Founding Regulation](#)
- [Implementing rules for networking](#)

Results

✓ [Call for proposals - CFP/EFSA/AHAW/2010/02: Contribution of meat inspection to animal health surveillance](#)

Deadline: 29 September 2010

Outsourcing activities made to support the report on technical assistance:

1. Contract on assistance in descriptive and statistical analyses of surveillance and monitoring data on zoonotic agents related to public health hazards to be covered by meat inspection;
2. Contract on literature searches for data on some zoonotic bacteria and parasites in humans, food and animals

Zoonoses Monitoring unit

- EFSA provides scientific advice and scientific and technical support for legislation and policies in all fields which have a direct or indirect impact on food and feed safety.
- EFSA's scientifically based risk assessments serve as a means for the identification of food safety risk control options, which are then reflected in EU legislation.
- EFSA applies an integrated approach in its reply to the request received by the EC
- Current meat inspection mandate: complex due to the number of species to be assessed and the different expertise required (6 EFSA Units involved + Outsourcing)
- Data availability is “key” in providing the most useful answer to the EC request

Thank You !!!

EFSA is committed to:

**Excellence,
Independency,
Responsiveness and
Transparency**

www.efsa.europa.eu

[@efsa.europa.eu](https://twitter.com/efsa_europa)